

# SOVEREIGN HILL LEARNING

Join the gold rush

Explore the past

Learn from our stories

2025 LEARNING PROGRAMS FOR EARLY, PRIMARY AND SECONDARY YEARS STUDENTS





**Sovereign Hill acknowledges the Wadawurrung people as the Traditional custodians of the land on which we operate. We pay our respects to their Elders past and present, and to all of the Aboriginal and Torres Strait Islander people who live and work on Wadawurrung Country. We acknowledge their unceded sovereignty over Wadawurrung Country, and the ongoing hardship and trauma as a result of colonisation. The history and continuous culture of the Wadawurrung people is an important part of our shared story.**

## **WELCOME**

The Sovereign Hill Museums Association's (SHMA) Learning Team is excited to partner with you in 2025 to create engaging learning experiences. As a non-profit living museum we acquire, conserve, exhibit both tangible and intangible heritage for learning and enjoyment. Our mission is to deliver meaningful, immersive experiences that connect people to history to foster a better future.

Our programs focus on the 1850s gold rush and the environment, offering a variety of indoor and outdoor activities that cater to multiple curriculum areas. These stimulating experiences encourage curiosity and inquiry, empowering learners to become global citizens.

We deliver Victorian and Australian Curriculum linked learning programs that build knowledge and understanding that learners are curious to explore and inquire about. Using the expertise of staff across our sites, schools are able to access enriching learning experiences and resources that are immersive, accessible and inclusive for all.

Each visit offers new opportunities and the chance to enjoy your favorite activities, creating lasting memories that enhance learning both on-site and beyond. We prioritize the health and safety of our visitors and staff and will keep you informed of any changes to your program availability.

**SHMA is committed to being a child safe organisation where children and young people feel safe, respected, heard, valued and protected from harm. SHMA has a zero tolerance of child abuse, neglect and all forms of harm to children and young people.**

Please contact us to discuss all your program needs at [education@sovereignhill.com.au](mailto:education@sovereignhill.com.au)

**Sofia Fiusco**  
Head of Learning

---

## **CONTENTS**

3	Our Museum Sites
4	Outdoor Museum Map
3 - 10	Primary & Secondary Learning Programs
11	Memorial Box Loan Program
12	Museum Experiences
13 - 15	Learning in a Museum Setting
16	Outdoor Museum Suggested Itineraries
17	Pricing
18	Enquiry Form

## OUR LEARNING PROGRAMS ARE DELIVERED ACROSS TWO MUSEUM SITES:



### OUTDOOR - LIVING MUSEUM

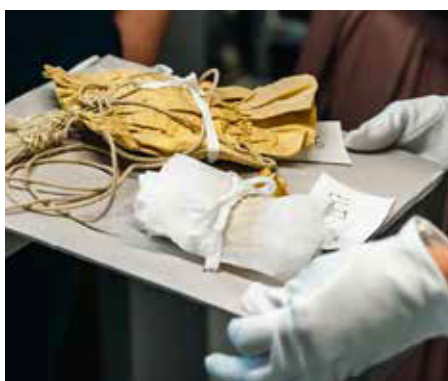
Covering 15 hectares of a former gold mining site, Sovereign Hill is an Australian tourism icon that brings the gold rushes to life through a living township with diggings, underground mines, costumed interpreters, coach rides and 1850s shops, trades, schools and dwellings. Situated in the historic city of Ballarat, the Outdoor Museum is located in Bradshaw Street, a comfortable 90-minute drive from Melbourne along the Western Highway.

#### EDUCATION FEATURES

- Education Officers facilitating learning to Early Years, Primary, Secondary and Tertiary aged students
- Access to learning program materials that enrich the Victorian and Australian Curricula
- Five Costumed Schools delivering programs for up to 300 students a week
- A museum collection of over 150,000 historical objects to be explored
- Camp accommodation for up to 250 visitors nightly
- Engaging learning experiences included education programs, rare trade demonstrations, mine tours, and AURA – an evening sound and light show

Interested in learning more visit

<https://www.sovereignhill.com.au/learning-programs/>



### ACGRC - GOLD RUSH COLLECTIONS

Nestled on the hillside opposite the outdoor museum, ACGRC has views of Ballarat represented in our collection. For more than 50 years, research and collections have been at the heart of the living museum. Historical research and inquiry informs all aspects of the museum from the streetscapes, buildings, the stories, activations and the costumes.

#### EDUCATION FEATURES

- Education officers facilitating day and camp programs for Early Years, Primary, Secondary and Tertiary aged students
- Access to learning program materials that enrich the Victorian and Australian curricula, creating connections to who we are, our culture, identity and practices.
- Access to our collection of 150,000 objects that tell our stories.
- Engaging learning experiences tailored to meet the diverse needs of school based learning programs, connecting learners to artefacts and building skills and knowledge.

Interested in learning more visit

<https://www.sovereignhill.com.au/learning-programs/>

## ENQUIRIES

E [education@sovereignhill.com.au](mailto:education@sovereignhill.com.au)

Visit [www.sovereignhill.com.au/learning](http://www.sovereignhill.com.au/learning)

#### KEEP IN TOUCH WITH US AT:

[sovereignhilledblog.com](http://sovereignhilledblog.com)

 @GoldfieldsEd  @sovereignhilllearning

SOVEREIGN HILL EDUCATION IS SUPPORTED BY:



Department  
of Education



Victorian  
Catholic  
Education  
Authority

# SOVEREIGN HILL LEARNING

- 1 ENTRANCE BUILDING (Day visit schools arrival)
- 2 BRIGHT VISIONS THEATRETTE
- 3 GOVERNMENT CAMP
- 4 CHINESE CAMP
- 5 CHINESE TEMPLE
- 6 RED HILL MINE
- 7 GOLDFIELDS - WATERLOO STORE
- 8 GOLD PANNING
- 9 BLACKSMITH
- 10 CARVER & DALTON AUCTION ROOMS
- 11 HOPE BAKERY
- 12 PHOTOGRAPHIC ROOMS
- 13 BALLARAT TIMES - PRINTER
- 14 SWEET SHOP - CONFECTIONER
- 15 GROCER
- 16 POST OFFICE
- 17 JEWELLER
- 18 CAFE & PLAY SPACE
- 20 NEW YORK BAKERY
- 21 APOTHECARIES HALL
- 22 SADDLERY
- 23 UNIVERSAL TRANSIT OFFICE
- 24 CHARLIE NAPIER HOTEL
- 25 SCHOOL ACCESS GATE
- 26 VICTORIA THEATRE / UNITED STATES HOTEL
- 27 CONFECTIONERY FACTORY
- 28 GOLD POUR
- 29 EDUCATION CENTRE
- 30 ST ALIPIUS DIGGINGS SCHOOL
- 31 CRITERION DRAPERY STORE
- 32 HORSE BAZAAR - COACH RIDES
- 33 TINSMITHS
- 34 PARADE SHOWGROUND
- 35 QUARTZ MINE - MINE TOURS
- 36 ENGINE HOUSE
- 37 CANDLE WORKS
- 39 RAGGED SCHOOL
- 40 BOWLING SALOON & FIRE STATION
- 41 JOHN ALLOO'S
- 42 CAMP ACCOMMODATION & CHECK-IN (Sovereign Hill Hotel)
- 43 RED HILL NATIONAL SCHOOL
- 44 WHEELWRIGHT & COACHBUILDER
- 45 ST PETER'S DENOMINATIONAL SCHOOL
- 46 GIFT SHOP - Carpark
- 48 R GIBBINGS, LIVERY & BAIT STABLES
- 50 WESLEYAN DAY SCHOOL
- 51 COSTUMED SCHOOLS ARRIVAL
- 52 SPEEDWELL STREET
- 65 ALEX KELLY STABLES
- 66 BANK / GOLD OFFICE

## DIGITAL TOURS

### Hidden Histories - The Wadawurrung people

A digital tour that brings to life the perspectives and participation of Aboriginal people on the Ballarat goldfields from 1851-1871.

[sovereignhillhiddenhistories.com.au](http://sovereignhillhiddenhistories.com.au)

We acknowledge the traditional Aboriginal custodians of the land upon which Sovereign Hill and Narmbool sit, the Wadawurrung, and their ongoing connection to this land and pay respect to their culture and their Elders past, present and future.



## VISITOR SERVICES

- Information
- First Aid Kit
- Food & Drink

- Toilets
- Water Tap
- Disability Toilet

- Parenting Room
- Lockers
- Seating

- Emergency Evacuation Point
- Suggested Stroller & Wheelchair Route
- Ramps

## PRIMARY LEARNING PROGRAMS

### Foundation – Level 2

#### Then & Now \* (50 mins)

Students connect, compare and contrast the differences between childhood now and in the 1850s.

#### Victorian Curriculum Links

- History
- Personal & Social Capability
- Critical & Creative Thinking

#### Creating a City (50 mins)

Students explore the museum as a backdrop to understanding how we create communities.

#### Victorian Curriculum Links

- Geography
- History
- Civics & Citizenship

#### Exploring the Collection (50 mins)

Students explore primary sources to understand the significance of places and objects to chronological storytelling.

#### Victorian Curriculum Links

- History
- Personal & Social Capability
- Critical & Creative Thinking

### Level 3 - 4

#### Living in the Past (50 mins)

Students use primary sources to explore aspects of daily life of people living through Victoria's 19th century gold rushes.

#### Victorian Curriculum Links

- History
- Geography
- Personal & Social Capability
- Critical & Creative Thinking

#### Gold Rush Immigration \* (50 mins)

Students become history detectives using primary and secondary sources to investigate the stories of male and female gold rush migrants.

#### Victorian Curriculum Links

- History
- Civics & Citizenship
- Personal & Social Capability
- Critical & Creative Thinking

#### Goldfields STEM \* (50 mins)

Students explore simple machines and technologies of the past to understand, design and innovate using the SCAMPER method.

#### Victorian Curriculum Links

- History
- Technology
- Personal & Social Capability
- Critical & Creative Thinking

#### Chinese People on the Goldfields (50 mins)

Students explore daily life of Chinese migrants on the Victorian goldfields, examining the significance of events and symbols that highlight diversity and identity in the colony.

#### Victorian Curriculum Links

- History
- Technology
- Personal & Social Capability
- Critical & Creative Thinking

#### Welcome to the Goldfields (50 mins)

Students are guided on a walking tour of the museum, to understand the narrative of the Ballarat goldfields and its people, to enrich their knowledge of Australia's colonial past, from 1851 to the late 19th Century.

#### Victorian Curriculum Links

- History
- Technology
- Personal & Social Capability
- Intercultural Capability

#### Aboriginal People and the Goldfields (50 Minutes)

Students explore the experiences, perspectives and responses to 19th century European colonisation on Ballarat's Aboriginal people.

#### Victorian Curriculum Links

- History
- Geography
- Personal & Social Capability
- Ethical & Intercultural Capability

### Level 5 - 6

#### Aboriginal People and the Goldfields (50 mins)

Students explore the impacts of 19th century European colonisation on Ballarat's Aboriginal people.

**This program includes a walking tour.**

#### Victorian Curriculum Links

- History
- Geography
- Personal Social, Ethical & Intercultural Capabilities

#### Goldrush Immigration \* (50 mins)

Students become history detectives to investigate the stories of goldrush migrants.

#### Victorian Curriculum Links

- History
- Civics & Citizenship
- Personal & Social Capability
- Critical & Creative Thinking

#### Living in the Past – a changing society \* (50 mins)

Students explore living in the past to explain the causes and effects of change on a developing society and the impact that it had on the people.

#### Victorian Curriculum Links

- History
- Personal & Social Capability
- Ethical Capability
- Intercultural Capability

**Gold Fever \* (50 mins)**

Students join the 'rush' to One Eye Gully to role-play the experiences of the miners, gold buyers and troopers to understand the highs and lows that led to the Eureka Rebellion in 1854.

**Victorian Curriculum Links**

- History
- Civics & Citizenship
- Personal & Social Capability
- Critical & Creative Thinking

**Chinese People on the Goldfields**

+ \* (50 mins)

Students experience daily life of Chinese migrants on the Victorian goldfields and explore the contributions they made to life in the colony.

**Victorian Curriculum Links**

- History
- Ethical
- Personal & Social Capability
- Critical & Creative Thinking

**Put Yourself in the Eureka Story (50 mins)**

Students re-create scenes of the key events of the Eureka Rebellion to learn about its significant impact on developing a colony.

**Victorian Curriculum Links**

- History
- Civics & Citizenship
- Personal & Social Capability
- Critical & Creative Thinking

+ Cross Curriculum Learning Priorities about Asia and Australia's engagement with Asia

\* Complimentary learning program self-guided tour available

## COLLECTIONS OBJECT-BASED LEARNING (OBL) LEARNING PROGRAMS

### Foundation - Level 4

**Collection CloseUp: Ballarat Stories (30 mins)**

Students explore important places, spaces, or events that have changed over time in Ballarat.

**Victorian Curriculum Links**

- History
- Intercultural Capability

### Level 3 - 4

**Collection CloseUp: Picturing the Past (30 mins)**

Students examine change over time and the photographs in remembering and the past by exploring historic camera and photographs of the Ballarat community.

**Victorian Curriculum Links**

- History
- Personal & Social Capability

**Collection CloseUp: Celebrations (30 mins)**

Students explore a year of special events in the city. What do we celebrate? How do we celebrate? Who do we celebrate with? We will see ceremonial costume, special gifts given, trophies, and other mementos from important moments people have celebrated. Together we will explore change over time and different ways we come together as families and communities.

**Victorian Curriculum Links**

- History
- Intercultural Capability
- Personal & social Capability

### Level 5 - 6

**Collection CloseUp: The Eureka Collection (50 mins)**

Students are exposed to objects relating to the story of the Eureka rebellion and practice good historical questioning to look at what information each source provides.

**Victorian Curriculum Links**

- History
- Civic & Citizenship
- Critical & Creative Thinking
- Ethical Capability
- Visual Arts

**Self-guided tours are designed to complement learning programs or for schools self-guiding their experience on-site.**

Visit <https://www.sovereignhill.com.au/learning/self-guided-museum-tours/> to learn more.

**Social Scripts** designed to support students visiting our Living Museum.

Visit <https://www.sovereignhill.com.au/visit/accessibility/social-scripts/> for further details.



## SOVEREIGN HILL COSTUMED SCHOOL - 2 DAY EXPERIENCE

Sovereign Hill School offers a unique two day, fully immersive, costumed school experience tailored to Year 5 and 6 students. As part of this program, students are in the charge of 'Ma'am' or 'Sir' who is strict, all knowing and the embodiment of 1850's Victorian authority. Role play is central to the success of the program, essentially once costumed, the student becomes a living exhibit in the Sovereign Hill Outdoor Museum.

### Students will:

- Experience colonial school life in one of the museum's schools: Red Hill National School, St Peter's Denominational School, Ballarat Benevolent Asylum Ragged School, St Alipius Diggings School or Wesleyan Day School
- Role play being a child of the 1850's at school on the goldfields, abiding by the behavioural expectations of the era
- Be exposed to fascinating insights into the distinct social norms and hierarchy of the times
- Have the rare opportunity to go behind the scenes of many Sovereign Hill businesses and experience first-hand the tough and turbulent times of life on the diggings

### Victorian Curriculum Links Level 5 & 6

- History
- Personal & Social Capabilities
- Critical & Creative Thinking
- Ethical Capability
- Drama
- Science

### Bookings

To make a booking, schools must be on the Sovereign Hill Schools mailing list. To be placed on the list please email [sovereign.hill.sch@education.vic.gov.au](mailto:sovereign.hill.sch@education.vic.gov.au) with the following information:

- **School name and address**
- **School email address and phone number**
- **School contact person: name and email address**

The Costumed School program is in high demand. Bookings open each year in Term 1 for the subsequent year. For example, bookings for 2026 programs will open at the end of January 2025. All schools on the mailing list will be invited to apply for bookings from the opening date each year.

For more information on the Costumed School School 2 Day Experience visit: <https://www.sovereignhill.com.au/learning-programs/costumed-school>

## SECONDARY LEARNING PROGRAMS

### Level 7 – 8

<p><b>We Built this City on Rock n Gold #</b> (90 mins \$9.50 per person)</p> <p>Students examine the geological features that caused gold to be present in extractable quantities in Ballarat and explore the impact of water on the formation and extraction of gold. <b>Underground mine tour included.</b></p> <p><b>Victorian Curriculum Links</b></p> <ul style="list-style-type: none"> <li>• Science</li> <li>• Geography</li> <li>• History</li> <li>• Sustainability</li> </ul>	<p><b>Environmental Impacts of Colonisation &amp; Gold #^</b> (50 mins)</p> <p>Students investigate how Victoria's environment was changed in the 19th century and what this meant for the lifestyles of the first inhabitants and new migrants.</p> <p><b>This program includes a walking tour.</b></p> <p><b>Victorian Curriculum Links</b></p> <ul style="list-style-type: none"> <li>• History</li> <li>• Geography</li> <li>• Ethical Capability</li> </ul>	<p><b>Dilemma Based Learning</b> (90 mins \$7.50 per student plus \$100 ACL)</p> <p>Students analyse choices people made given the conditions of the time by navigating the historical dilemma of the Anti-Chinese League.</p> <p><b>Victorian Curriculum Links</b></p> <ul style="list-style-type: none"> <li>• History</li> <li>• Civics &amp; Citizenship</li> <li>• Personal &amp; Social Capability</li> <li>• Ethical Capability</li> <li>• Critical &amp; Creative Thinking</li> </ul>
---	--	---

### Level 9 – 10

<p><b>Australia and Asia: Aboriginal People #</b> (50 mins)</p> <p>Students explore the impacts of 19th century European colonisation on Ballarat's Traditional Custodians of the land.</p> <p><b>This program includes a walking tour.</b></p> <p><b>Victorian Curriculum Links</b></p> <ul style="list-style-type: none"> <li>• History</li> <li>• Geography</li> <li>• Personal &amp; Social Capability</li> <li>• Ethical Capability</li> <li>• Intercultural Capability</li> </ul>	<p><b>Environmental Impacts of Colonisation and Gold #^</b> (50 mins)</p> <p>Students investigate how Victoria's environment was changed in the 19th century and what this meant for the lifestyles of the first inhabitants and new migrants.</p> <p><b>This program includes a walking tour.</b></p> <p><b>Victorian Curriculum Links</b></p> <ul style="list-style-type: none"> <li>• History</li> <li>• Geography</li> <li>• Ethical Capability</li> </ul>	<p><b>Dilemma Based Learning</b> (90 mins \$7.50 per student plus \$100 ACL)</p> <p>Students analyse choices people made given the conditions of the time by navigating the historical dilemma of the Anti-Chinese League.</p> <p><b>Victorian Curriculum Links</b></p> <ul style="list-style-type: none"> <li>• History</li> <li>• Civics &amp; Citizenship</li> <li>• Personal &amp; Social Capability</li> <li>• Ethical Capability</li> <li>• Critical &amp; Creative Thinking</li> </ul>
<p><b>The Industrial Revolution in Australia</b> (50 mins)</p> <p>Students experience the Museum's collection to understand the impact of the Industrial Revolution on living and working conditions in Australia.</p> <p><b>This program includes a walking tour.</b></p> <p><b>Victorian Curriculum Links</b></p> <ul style="list-style-type: none"> <li>• History</li> <li>• Geography</li> <li>• Economics &amp; Business</li> <li>• Technologies</li> </ul>	<p><b>Australia and Asia: Chinese Migrants +</b> (50 mins)</p> <p>Students analyse the experiences of Chinese migrants to Victoria and discuss the decision making they faced in the lead-up to Federation.</p> <p><b>Victorian Curriculum Links</b></p> <ul style="list-style-type: none"> <li>• History</li> <li>• Ethical Capability</li> <li>• Intercultural Capability</li> </ul>	

# Cross Curriculum Learning about Aboriginal and Torres Strait Islander histories and cultures

^ Cross Curriculum Priorities Learning about Sustainability

+ Cross Curriculum Priority Learning about Asia and Australia's engagement with Asia

\* Complimentary learning program self-guided tour available

**Self-guided tours** are designed to complement learning programs or for schools self-guiding their experience on-site.

Visit <https://www.sovereignhill.com.au/learning/self-guided-museum-tours/> to learn more.

**Social Scripts** designed to support students visiting our Living Museum.

Visit <https://www.sovereignhill.com.au/visit/accessibility/social-scripts/> for further details.

## Level 7 - 10 / VCE

### Collection CloseUp: Is it real? (50 mins)

Students will explore the collection to develop their general historical thinking skills in a hands-on workshop investigating is it real or fake and questioning how do we know?

#### Victorian Curriculum Links

- History
- Ethical Capability
- Critical & Creative Thinking Capability
- VCE History

## Level 9 - 10

### Collection CloseUp: World War I: A Soldier's Journey (50 mins)

Students will experience the personal collection of Captain Brian More O'Sullivan, a 23 year-old doctor killed in action in France in 1918, students gain an understanding of the experiences of those who served, the significant places where Australians fought, homefront perspectives, and different interpretations of the significance and legacy of World War I.

#### Victorian Curriculum Links

- History
- Critical & Creative Thinking
- Ethical Capability
- Intercultural Capability
- Personal & Social Capability

### Collection CloseUp: The Chinese Collection + (50 mins)

Students learn about one of the world's oldest collections of Chinese processional objects, including Loong the dragon, discover the extensive collection of missionaries George and Robina Arnott-Rogers and explore questions of migration and cultural exchange between China and Australia in the period 1850-1918.

#### Victorian Curriculum Links

- History
- Critical & Creative Thinking
- Ethical Capability
- Intercultural Capability
- Personal & Social Capability

**Living Museum Program Link:** Australia and Asia: Chinese Migrants



## VCE Masterclasses

### VCE Health and Human Development (90 mins)

Students will explore Ballarat goldrush conditions, our medical collections, and more broadly nineteenth century living conditions and how public health systems and wellbeing ideas have evolved into the systems we find today.

#### VCAA Study Design Links

**Unit 3:** Australia's health in a globalised world

**Area of Study 2:** Promoting health and wellbeing

**Aligns to VET Allied Health**

### VCE Business Management (90 mins)

Students investigate Sovereign Hill as a not-for-profit business case study to describe how and why business ideas are created and developed through the nurturing of a culture of business innovation and entrepreneurship.

#### VCAA Study Design Links

**Unit 1 & 2:** Planning a business

**Area of Study 1:** The business idea

**Unit 4 of Study 2: Establishing a business**

**Area of Study 2:** Marketing & Staffing a Business

### VCE Geography (90 mins)

Students explore Sovereign Hill as a tourism case study, looking at the socio-cultural value of the outdoor museum and its economic and environmental sustainability. A tour to identify Sovereign Hill's environmental management practices enables students to collect information and photographic data for their fieldwork component, including GIS.

#### VCAA Study Design Links

**Unit 2:** Tourism

**Area of Study 1:**

The Characteristics of Tourism

**Area of Study 2:**

The Impacts of Tourism

### VCE Australian History (90 mins)

Students explore the broad theme of 'Continuity and Change' using nineteenth century Ballarat as a case study. Topics include the impacts of colonisation, understanding belonging and citizenship, and the impact of power and resistance. Students analyse the foundations of continuity and change in the developing colony and examine the contributions of significant events, ideas and perspectives.

#### VCAA Study Design Links

**Unit of Study 3 and 4**

**Area of Study 1:** Foundations

### Outdoor and Environmental Studies (90 mins)

Students learn about Australia's natural environment and investigate the way it has been manipulated over time. Topics include traditional Aboriginal land, European settlement through squatters, the quest for gold, and impact on our natural environment and its unique flora and fauna. Students then explore the impacts of these dramatic changes through a guided tour of Sovereign Hill featuring exhibits that reveal how quickly Ballarat's landscapes and ecosystems were transformed. Additional fieldwork session can be requested.

#### VCAA Study Design Links

**Unit 3:** Relationships with Outdoor Environments

**Area of Study 2:** Relationships with Australian Environments in the past decade

### VCE The Arnott-Rogers Collection and Chinese Processional Collection (90 mins)

Students explore the collection of missionaries George and Robina Arnott-Rogers, collected between 1895 and 1916 in Sichuan province. The collection provides an incredible window into life in rural China in a period of great change. China Inland Mission organisation (CIM); CIM required their missionaries to live as much as possible like the people to whom they were ministering. Many of the textiles in the collection were worn or used in the household by the family. Robina ran a nursing station and was a skilled and trusted nurse/doctor/surgeon/dentist and midwife; her daily diaries, letters, photographs and the artefacts they collected. This collection is supplemented by a look at the Processional Collection that provides some insight into contemporary Chinese culture in Ballarat both as an example of what has been lost in the Cultural Revolution in China and how Chinese culture may have evolved differently in the Chinese diaspora.

#### VCAA Study Design Links

**History Unit 3 & 4:** Revolutions

**Area of Study 1 and 2**

- Causes and consequences of revolution (China)



## AUSTRALIAN WAR MEMORIAL – MEMORIAL BOX LOAN PROGRAM

As the Victorian agent for the Australian War Memorial's Memorial Box program we provide groups with access to Memorial Boxes that are an engaging and interactive thematic learning resource. Each box is filled with real and replica uniforms, equipment, artefacts that share the stories of Australian servicemen and servicewomen.

### **Box 1 Australians in the First World War**

This Memorial Box is filled with real and replica uniforms, equipment and artefacts from the First World War. It includes objects that explore the Anzac experience, as well as the contribution of Australian sailors, airmen, nurses, and those at home during a defining period in our nation's history.

### **Box 2 Australia in Wartime and Peacekeeping Operations since 1946**

This Memorial Box includes real and replica items relating to Australian experiences in wartime and peacekeeping since the end of the Second World War. Through objects, images, and online resources, students can explore Australia's involvement in places such as Korea, Vietnam, East Timor, Bougainville, and Afghanistan.

### **Box 4 Australia in the Second World War**

This Memorial Box explores the Australian experience of the Second World War - the war that seemed to affect every aspect of life as Australia itself came under attack. Almost a million Australians served at home and abroad; on land, at sea, or in the air. Their stories come to life as you unpack the real and replica Second World War items in this Box.

- Boxes are free to loan apart from the cost of delivery of the boxes to and from organisations and are available in 2 week loan periods, including shipping time.
- Organisations are responsible for organising the pick-up and return.
- On-site pick-up is available Monday - Friday. Booking periods may be flexible depending on demand.

For additional Memorial Box Resources visit <https://www.awm.gov.au/learn/memorial-boxes>

Email [education@sovereignhill.com.au](mailto:education@sovereignhill.com.au) to book a Memorial Box



### Gold Mine Tours (45 mins)

#### THE SECRET CHAMBER

Level 3 - 4

**Focus** Community and First Contacts

The inspiring story of two Chinese brothers who sought their fortune in Victoria's New Gold Mountain.

#### LABYRINTH OF GOLD

Level 5 - 6

**Focus** From Colony to Nation

An underground journey to discover the working life of Ballarat's early miners.

#### TRAPPED

Level 9 - 10

**Focus** The Making of the Modern World and Australia

The story of the 1882 disaster that struck in the New Australasian No. 2 Mine at Creswick.

### Evening Program

#### AURA - SOUND-AND-LIGHT SHOW (90 mins)

AURA is a multi-sensory sound-and-light show presenting the story of gold in all its wondrous forms. The atmospheric storytelling covers 64 acres, with hundreds of stunning projections to create an immersive storytelling experience that transports you back in time. The Wadawurrung creation story is told with projections on a magnificent lake, gunfights and protests erupt under the night sky, and the gold rush is brought to life as never before. You will feel the vibrations as stars explode in front of your eyes, watch as the land is transformed by the gold rush, and dive into the chaos of the Eureka Rebellion as you witness the creation and discovery of the world's most precious metal.

#### Victorian Curriculum Links

- History
- Media Arts
- English: Reading & Viewing

**Sovereign Hill was grateful for the opportunity to work with Uncle Jack Charles as part of our AURA show. Uncle Jack was a proud Boon Wurrung, Dja Dja Wurrung, Woiwurrung and Yorta Yorta senior Elder. He was a storyteller, an activist and much more. You will hear and see Uncle Jack in our AURA introduction and Welcome to Country and his family have given their permission for us to continue to use his name and images. May he be greeted by his Ancestors on his return home.**

#### THEATRE PERFORMANCE (35 mins)

Students will enjoy participating as an audience member in an interactive theatre piece performed for entertainment. Interpretive theatre is a key element for our living museum. Students will experience the theatre and key drama skills as performers shape characters, use voice and movement in improvisation and play-build performances of devised and scripted drama for them

#### Victorian Curriculum Links

- History
- Drama

\* Available to school groups who have booked the sound-and-light show and are staying more than 1 night at camp, minimum numbers required



## LEARNING IN A MUSEUM SETTING

Museums are incredible spaces where learners can forge meaningful connections to their lives. Through engaging experiences—rich in stories, play, objects, and context—museums create lifelong memories and inspire curiosity.

### ACROSS OUR MUSEUMS STUDENTS CAN ‘LEARN FROM THE PAST TO ADAPT TO A BETTER FUTURE’

Our ancestors offer valuable lessons on navigating a changing world and creating a better future. Students can reflect on how we interact with others, connect with culture, build communities, care for the environment, and respond to technological advancements. Our immersive museums provide the ideal settings for exploration, questioning, comparison, prediction, imagination, and debate.

**Our Museums are filled with our tangible and intangible history to guide our inquiries.**

#### TANGIBLE HISTORY

Can be touched, is real and existed

- Historical Buildings & Places
- Heritage Sites & Objects
- Cultural Objects & Collections
- Artefacts & Crafts
- Fine Art
- Cultural Landscapes
- Environment
- Archaeological Evidence
- Geological Evidence
- Palaeontological Remains
- Sacred & Spiritual Places
- Living Community Sites

#### INTANGIBLE HISTORY

Cannot be touched, exists through connection to something else

- Language
- Oral History
- Traditional Arts & Crafts
- Customs & Beliefs
- Indigenous Knowledge Systems
- Rituals & Living Traditions
- Cultural Performances
- Skills & Techniques
- Belief Systems – Values & Behaviours
- Industrial Design
- Identity
- Social Groupings: friendship – family

**Connecting the past to the present supports learning across the Victorian and Australian Curriculum capabilities.**

**Areas to explore include:**

#### Critical & Creative Thinking

- Innovation & Enterprise
- Challenges: Environmental, Social, Economic
- Motivation & Adaptation

#### Intercultural

- Multi-culturalism
- Cultural Practice
- Cultural Diversity

#### Personal & Social

- Expression & Empathy
- Resilience
- Appreciation of Diversity
- Relationships

#### Ethical

- Principles & Debate
- Individual Values
- Societal: needs & norms
- Open-mindedness

## Inquiry Questions to Explore

What can the history of Victoria's gold rushes teach us about our present and possible future?

Does the past make us who we are today?

Was life better in the past?

Where is the past in the present?

Were we more sustainable in the past?

How do we see people adapt to the future through the past?



Was it harder for men or women on the goldfields?

Were people more resilient in the 1850s than they are now?

What creates a sense of belonging?

How do we govern ourselves?

What 1850's culture remains embedded in the 21st century?

Were the good old days really that good?



How and why do people seek homes in new places?

What's more precious than gold and has this changed from the 1850's to today?

How has our culture changed over time?

Why do people explore?

Does technology change lives for the better?

What is the greatest innovation of the 19th Century?



Whose history is it?

How do we know if we weren't there?

What should stay in the past?

How does our intangible history connect to the future?

How do we measure change?

How can we create a better future?



Within our museums, students can engage in inquiry-focused investigations and problem-solving activities. They can begin with a variety of scenarios, questions and challenges to explore, or even design their own. Inquiry-based learning emphasises critical and creative thinking, enabling students to ask meaningful questions, conduct investigations, interpret evidence, form explanations and arguments, and effectively communicate their findings.

## LEARNING ONLINE WITH SOVEREIGN HILL

Our Education Officers have developed curriculum aligned learning materials that help schools enrich curious minds as they explore the past whether in the classroom, or on-site at the museum.



### SOVEREIGN HILL LMS

Browse our collection of museum resources curated in curriculum levels and themes to plan your learning experiences on or off-site.

Enrich your visit with pre and post visit learning materials that can be adapted to meet the needs of your learners.

Our resources are updated throughout the year, by signing up to the LMS you will have access 24/7.

**SIGN-UP -**  
[sovereignhillmuseum.work.openlms.cloud/login/index.php](https://sovereignhillmuseum.work.openlms.cloud/login/index.php)



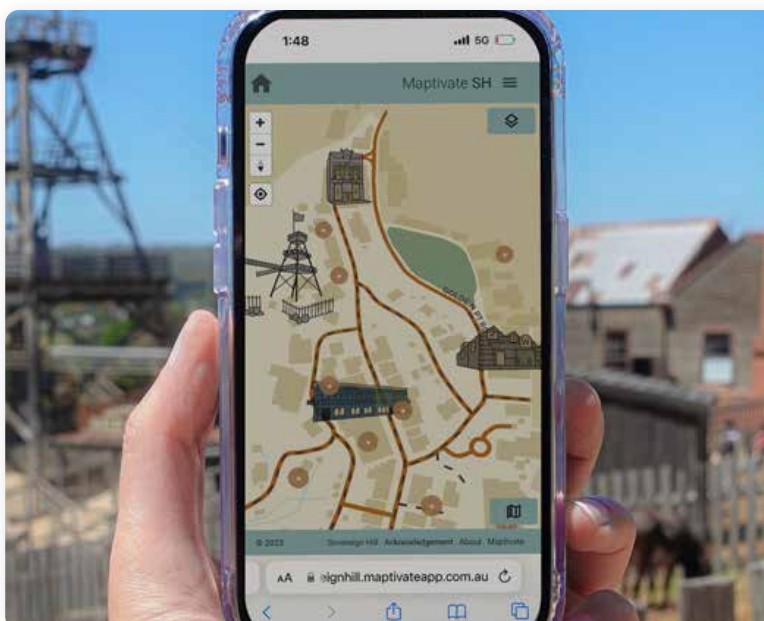
### HIDDEN HISTORIES

The Wadawurrung people; a digital tour that brings to life the perspectives and participation of Aboriginal people on the Ballarat goldfields from 1851-1871.

Activities include:

- Timeline 60,000 years ago to present day.
- Outdoor Museum Tour
- Videos
- FAQ
- Interactive Quizzes
- Sources

**VISIT -**  
[sovereignhillhiddenhistories.com.au](https://sovereignhillhiddenhistories.com.au)



### SOVEREIGN HILL INTERACTIVE MAP

Explore all that Sovereign Hill has to offer with our interactive map to plan your visit and to find your way around the site on your mobile device.

Go on a virtual tour with information, videos, and links both within the map and on the side bar.

The map has five layers which you can turn on or off depending on your needs and interests.

**VISIT -**  
[sovereignhill.maptivateapp.com.au](https://sovereignhill.maptivateapp.com.au)

## SUGGESTED OUTDOOR MUSEUM EXPERIENCES

Refer to our learning map and visit [www.sovereignhill.com.au/whats-on/](http://www.sovereignhill.com.au/whats-on/) for additional activities.

Itineraries below require Museum Entry. Prices are subject to change and will be confirmed on booking.

Visit Length	Activities
<b>3-4 hours</b>	<ul style="list-style-type: none"> <li>• Explore the museum precincts</li> <li>• Education session</li> <li>• Gold Pour demonstration</li> <li>• Gold panning</li> </ul>
<b>Package Price (subject to change) \$30 (entry, &amp; standard education session)</b>	
<b>4-5 hours</b>	<ul style="list-style-type: none"> <li>• Explore the museum precincts</li> <li>• Education session</li> <li>• Gold Pour demonstration</li> <li>• Red Hill Mine tour</li> <li>• Gold panning</li> <li>• Smooth Candle Dipping</li> </ul>
<b>Package Price (subject to change) \$35 (entry, candle &amp; standard education session)</b>	
<b>Camp 2 – 3 days</b>	<ul style="list-style-type: none"> <li>• Explore the museum</li> <li>• Education session x 1 or 2</li> <li>• Gold Pour demonstration</li> <li>• Red Hill Mine tour</li> <li>• Gold panning</li> <li>• Candle dipping</li> <li>• AURA – Sound-and-light show (evening experience)</li> <li>• Underground Mine tour (45 minutes)</li> <li>• Confectionery OR candle demonstration</li> <li>• Self-guided inquiry tours</li> </ul>
<b>Base Student Package Price (subject to change and based on a ratio of 10 students and 1 adult)</b> <b>+ 1 night - 2 day (entry, activities &amp; standard education sessions, catering, accommodation - no linen) \$250.00</b> <b>+ 2 night - 3 day (entry, activities &amp; standard education sessions, catering, accommodation - no linen) \$410.00</b>	



## EXCURSION PRICING

Using the excursion costs budgeting column you can generate indicative camp costings. This is not an official costing until it is generated by Sovereign Hill as many factors inform your final invoice. Prices subject to change.

### Planning notes:

- No GST on Entry - all other costs GST inclusive
- Use your student numbers to budget for education programs and experiences, calculate this at either an individual or group minimum price rate.
- Teacher/adult ratios are free-of-charge based on your overall student group size. Day ratio base is 2 Teachers and then 1 Teacher per 20 students. AURA ratio is 1 teacher per 10 students.
- The Sovereign Hill School and Sovereign Hill Museum invoice separately for the Costumed School Program.

<b>Sovereign Hill Outdoor Museum Entry – per person</b> (student, teacher, adult)	Price	Quantity	Excursion Costs
<b>Student Entry - One-day Ticket</b>	\$25		
<b>Student Entry - Multi-day Ticket</b>	\$40		
<b>Accompanying Adult Entry Price</b> (attending with a school, outside of ratios)	\$25		
<b>Tertiary Entry Price</b>	\$35		
<b>AURA Ticket Price -</b> (Student & Adults 1:10 ratio)	\$30		
<b>Evening Theatre Show - 50+ Students</b>	\$10		
<b>Evening Theatre Show Minimum Group Charge - &lt; 50 students</b>	\$500		

### Sovereign Hill and Collections Learning Programs

<b>Education Session &lt; 20 group</b> (min. group charge)	\$100		
<b>Education Session 20+ students</b>	\$5 pp		
<b>Goldrush Centre Session - Primary</b>	\$100		
<b>Education Session VCE Masterclass &lt; 12</b> (min. group charge)	\$120		
<b>Education Session VCE Masterclass 12+ students</b>	\$10 pp		
<b>Virtual Ed Session up to 50 students</b>	\$120		
<b>Virtual VCE Session up to 30 students</b>	\$150		
<b>Costumed School Program – 2 days</b> (\$26 invoiced school & \$34 museum)	\$60		

### Outdoor Museum Experiences subject to availability

<b>Underground Mine Tour</b>	\$5		
<b>Candle Dipping - smooth</b>	\$5		
<b>Anti-Chinese League Meeting</b>	\$100		

### PRG Individual Catering Items

<b>Morning or Afternoon Tea</b>	\$8		
<b>Lunch - Hope Bakery or Rolls with snacks and a drink</b>	\$17.50		
<b>Dinner</b>	\$32		
<b>Bottled Water</b>	\$4		
<b>TOTAL =</b>			

## SOVEREIGN HILL MUSEUM EXCURSION ENQUIRY FORM

Please return the form to: [education@sovereignhill.com.au](mailto:education@sovereignhill.com.au)

### Contact Details

Name: \_\_\_\_\_

School: \_\_\_\_\_

Postcode: \_\_\_\_\_

Email: \_\_\_\_\_

Phone: \_\_\_\_\_ Mobile: \_\_\_\_\_

### Request Details

**2025                      2026                      - The museum opens at 12pm on a Monday for booked schools**

I am interested in a:      1 day visit              Multi-day visit              Evening (AURA only)

Preferred Term:      T1      T2      T3      T4

Times:                      Arrival \_\_\_\_\_ Departure \_\_\_\_\_

Preferred Dates:      Preference 1: \_\_\_\_\_

Preference 2: \_\_\_\_\_

Preference 3: \_\_\_\_\_

### School Details

School Type:      Early Years              Primary              Secondary              Tertiary              Other: \_\_\_\_\_

Year Level:      Kinder              F              1              2              3              4              5              6              7

8              9              10              VCE VM              VCE              VPC/VET

Numbers:              Students \_\_\_\_\_ Classes \_\_\_\_\_ Staff \_\_\_\_\_ Other \_\_\_\_\_

### MARK ALL ACTIVITIES OF INTEREST (Activities are subject to availability) \*Minimum group charges may apply

Museum - PAID		Museum - FREE (rank in order of interest 1 to 4)	
	1 - Preferred Outdoor Museum Program		Red Hill Mine Tour
	2 - Preferred Outdoor Museum Program		Gold Pour Demonstration
	3 - Gold Rush Collections Centre Program		Confectionery Demonstration
	Quartz Mine Tour		Candle Dipping Demonstration
	Anti-Chinese League - ACL	<i>If you do not nominate a preferred Learning Program an age appropriate program will be selected for you based on availability.</i>	
	Candle Dipping - Smooth Candle		
	Evening AURA Sound & Light Show		

### Please email me the following pre-order retail forms:

	Ballarat Times
	Gold Smelting Works & Dilge's Blacksmith Shop
	Sovereign Hill Shop
	PRG Catering Options

### Please describe any accessibility requirements

## CONTACT US

---

**E** [schoolbookings@sovereignhill.com.au](mailto:schoolbookings@sovereignhill.com.au)

**P** 03 5337 1188

**Visit** [www.sovereignhill.com.au/learning](http://www.sovereignhill.com.au/learning)

**SOVEREIGN HILL EDUCATION IS SUPPORTED BY:**



Department  
of Education