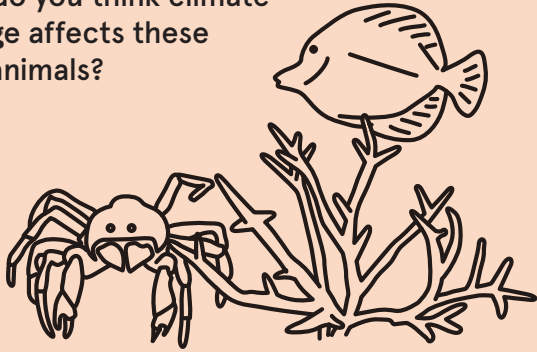


Warming oceans

The Great Barrier Reef is at risk of being lost due to warming waters, rising sea levels and severe storms.

Describe the coral skeleton and the other reef animals on display.

How do you think climate change affects these reef animals?

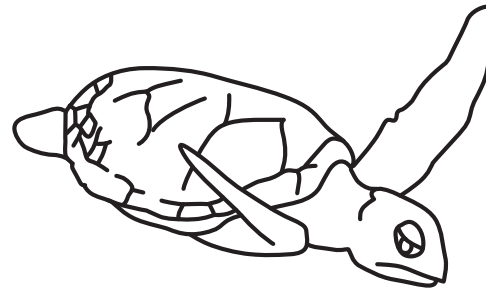


Animals at risk

Australian animals are being affected by a changing climate and loss of habitat.

Choose and describe an animal on display in the climate change exhibition.

What is its habitat and what features help it to survive there?

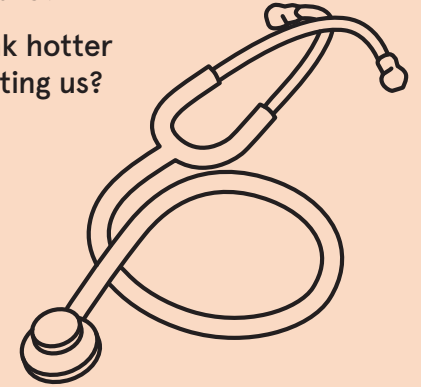


Health check

Climate change is having a negative impact on our health which affects some people worse than others.

What does this instrument on display measure?

How do you think hotter weather is affecting us?



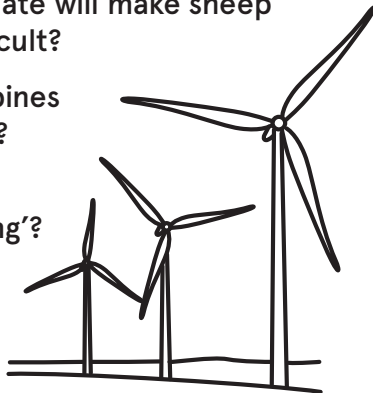
Farming the wind

Traditional farming will become less productive and unpredictable because of climate change.

Look at the wool on display. Why do you think a hotter climate will make sheep farming more difficult?

What do wind turbines turn the wind into?

Why is it a way of sustainable 'farming'?



What can we do?

In 2019, students inspired peaceful climate change protests around the world.

Look at the climate change signs. What do you think is important to the people who made them?

What would you write and draw on your own sign?



What can I do?

We are all contributing to climate change through what we consume.

Think about what you do during the day.

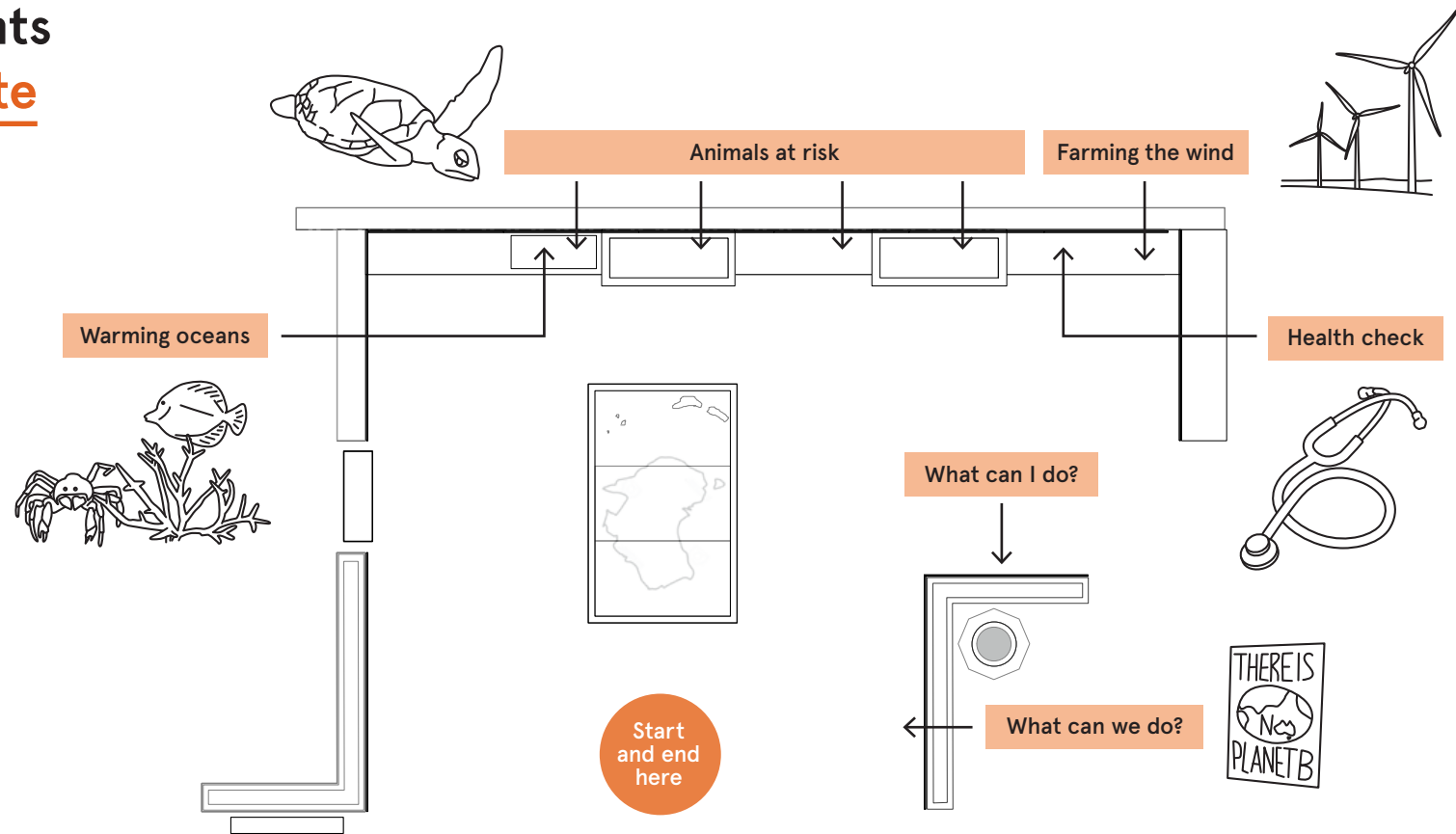
What changes could you make to reduce your carbon footprint?



Exhibition insights

Changing Climate

Primary school



Learning steps



Connect - Use the map to find the displays. Encourage students to look closely at the displays and connect with what they see, think and feel. Read nearby text panels or touchscreens for extra information.



Share - Facilitate opportunities for students to share and discuss their ideas about the displays using the insight questions to help them.



Reflect - Ask students to reflect on their findings of each display. We suggest you share ideas and findings as a whole group to help refine key messages and learning outcomes.

How to use

Exhibition insights can be used as they are or cut up and distributed amongst your group. The cards can be done in any order, and students can work individually or in small groups.